

# Skyline

*Continuous Lighting...*

ARLIGHT 

Member of the FAGERHULT Group

# Skyline

ORLIGHT 

Member of the FAGERHULT Group

A modern interior space featuring a long, illuminated ceiling light fixture and a window with horizontal blinds. The ceiling is dark, and the light fixture is a long, thin, recessed strip that glows with a warm white light. The wall is dark and textured. The window is covered with horizontal blinds, and light is streaming through them, creating a pattern of light and shadow. The floor is dark and reflective.

# Skyline

*Continuous Lighting...*



**Skyline presents economical lighting solutions for stores and industrial applications.**

**Skyline provides a great convenience for installation with suspended, on track and on surface mounting options.**

Skyline

# Economic Solutions In Lightning



Skyline is a perfect fit to various applications with its 5 different optic and opal lens options.

**Skyline**  
*Optic*



**Skyline**  
*Opal*



# Skyline

## Optic



## Skyline's Features

- Compact design specific to Arlight
- Considerable energy savings compared to conventional systems
- UV resistant, 94% efficient acrylic(PMMA) optic or opal polycarbonate lens option
- Suitable for ceiling height between 2.5m and 10m
- Low maintenance cost during operation and quick maintenance due to connector mounting system
- Eco friendly, no mercury vapor
- Replaceable component opportunity
- DALI system option
- Emergency kit available
- 5 year warranty

**Housing**  
Aluminium profile

**Optic**  
Acrylic optic lens with 5 different light distribution

**Cable**  
5x2,5 veya 7x2,5 halogen free.

**Flux Output**  
Up to 9.460 lm

**Total Input Power**  
Max. 58 W

**System efficacy**  
Up to 151 lm/ W

**CCT**  
4000K / 3000K

**Ingress Protection**  
IP20 / IP40

**Useful Lifetime**  
50.000 hours

# Skyline



## Housing

Aluminium extrusion profile and stainless steel mounting accessories with plastic end cap.

## Optics

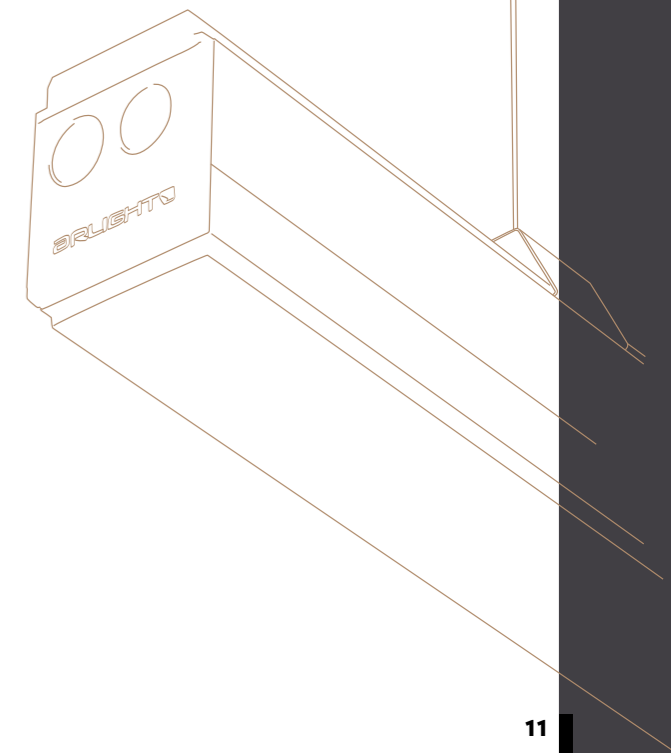
Optic lens or opal, white, diffusing polycarbonate lens with lambertian light distribution.

## Led

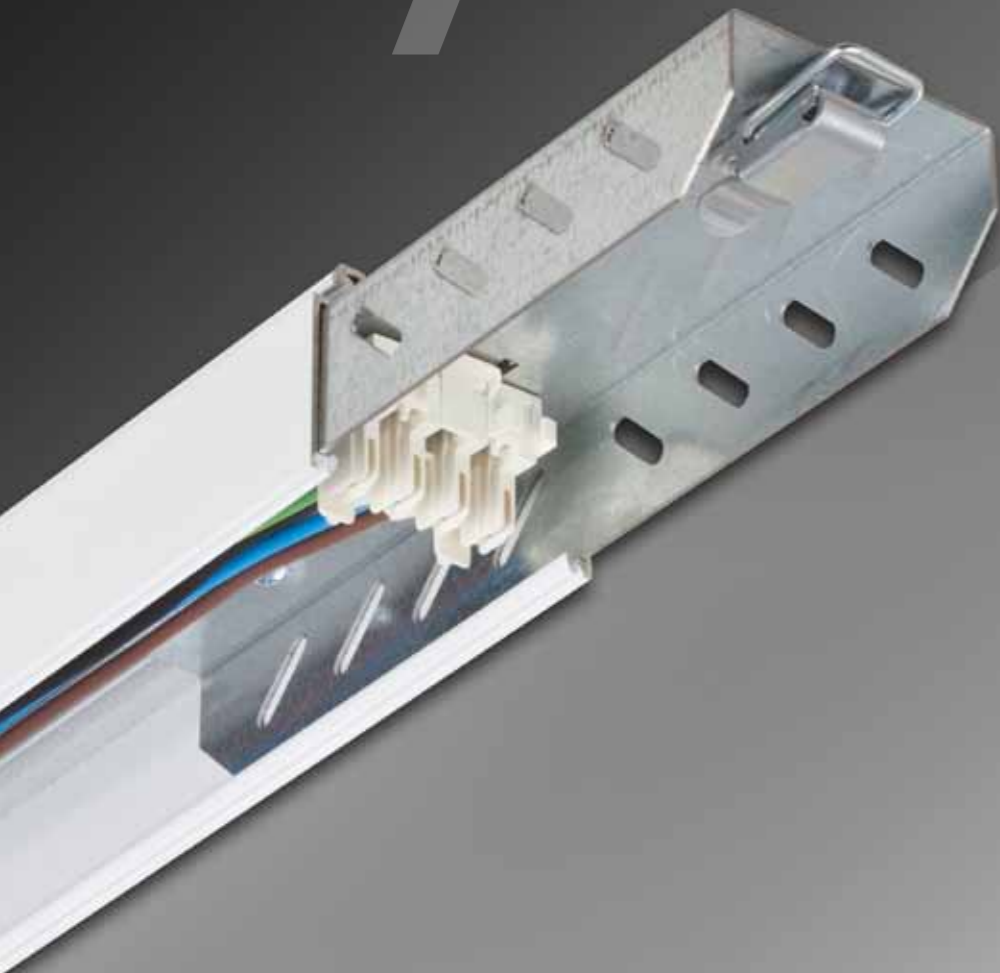
High-efficacy mid power LED with CRI>80, achieving L90B50  $\geq 50.000$  hours of lifetime.

## Driver

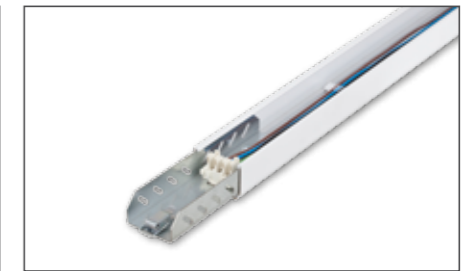
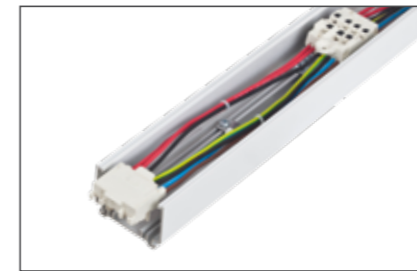
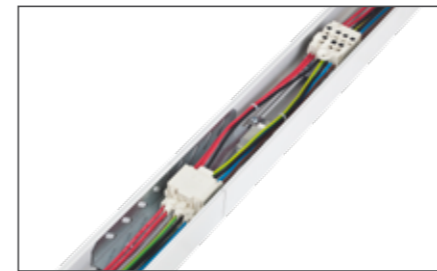
Constant current output LED driver with high efficiency and  $Pf \geq 95$ .



# Skyline



Energy Transfer Unit



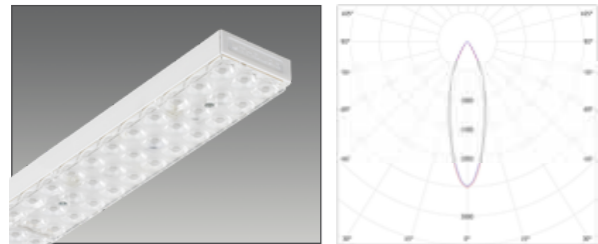
CODE	CABLE	ENERGY SUPPLY		CABLE CONNECTIONS		WEIGHT (kg)
		L1 (mm)	L2 (mm)			
SKL.EA.5X1	5 conductor	1440	1560	L1-L2-L3-N-GN	Electronic	1,9
SKL.EA.5X2	5 conductor	2880	3000	L1-L2-L3-N-GN	Electronic	3,4
SKL.EA.7X1	7 conductor	1440	1560	L1-L2-L3-N-GN-EL-EN/ (DA1-DA2)	Dali or Emergency Lighting Kit	2,0
SKL.EA.7X2	7 conductor	2880	3000	L1-L2-L3-N-GN-EL-EN/ (DA1-DA2)	Dali or Emergency Lighting Kit	3,6



# Light Modules

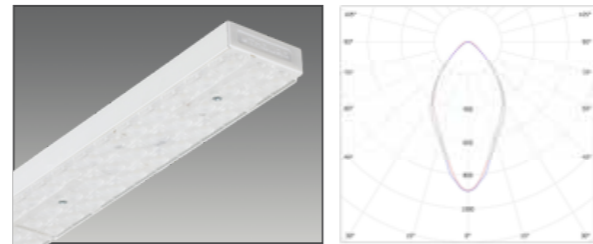
## Light Module 30° Optic Lens

SU 1440 SKL

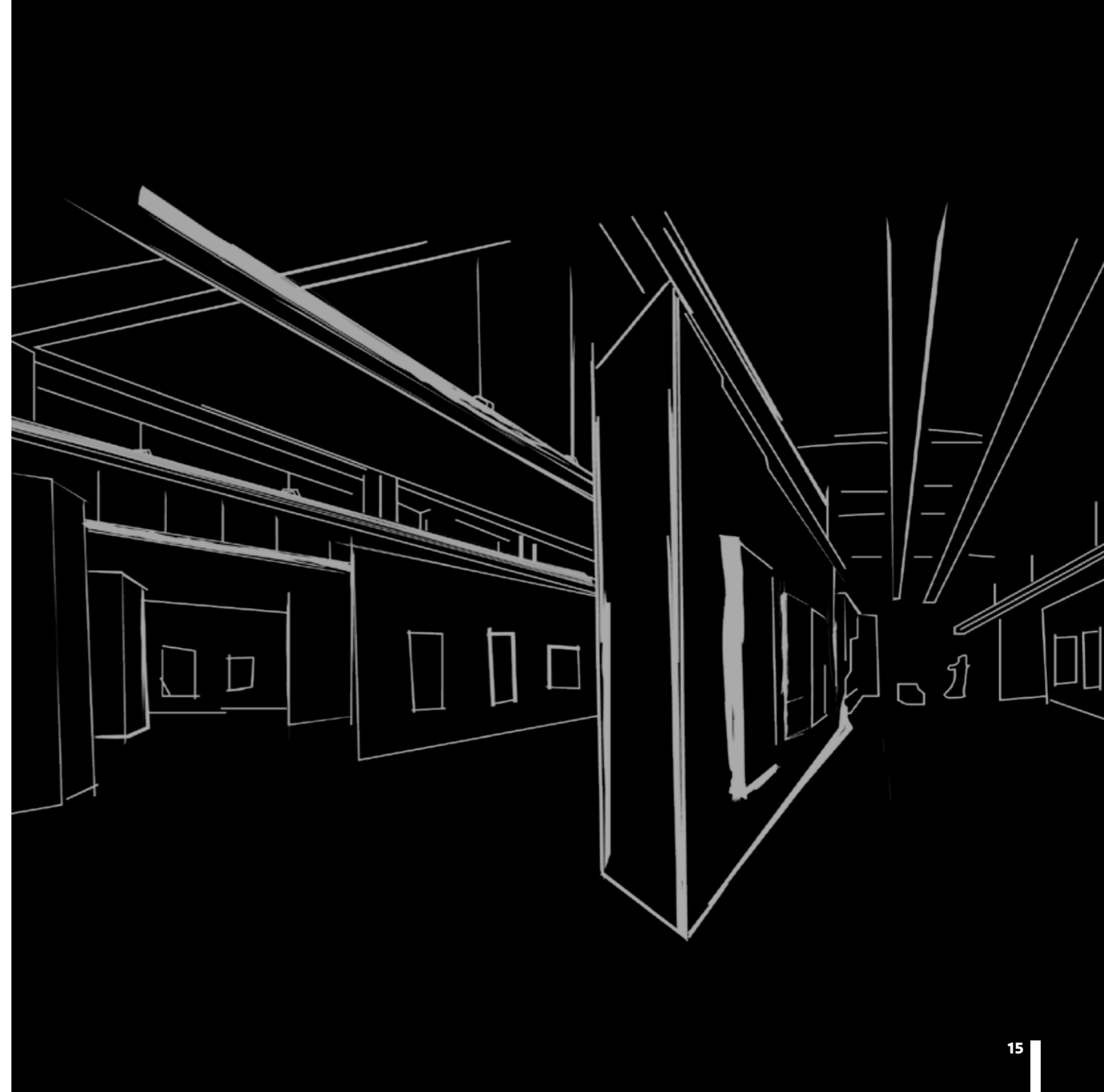
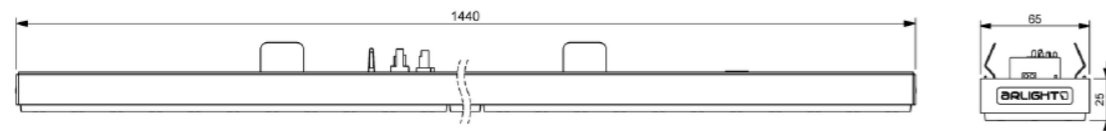


## Light Module 60° Optic Lens

SU 1440 SKL



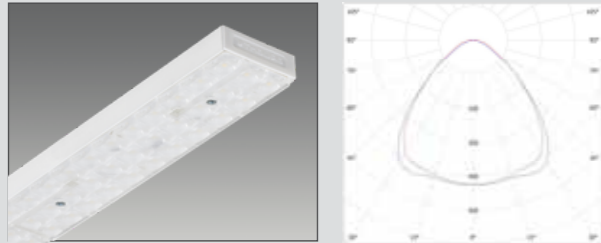
CODE	ORDER CODE	W	BEAM ANGLE	K	LM	CRI	V/Hz	WEIGHT (kg)
SU 1440 SKL	SUSKL.35W.40.30	35	30°	4000	5810	Ra > 80	220-240/50-60	2,0
	SUSKL.35W.30.30		30°	3000	5470			
	SUSKL.35W.40.60		60°	4000	5790			
	SUSKL.35W.30.60		60°	3000	5440			
	SUSKL.58W.40.30	58	30°	4000	9350			
	SUSKL.58W.30.30		30°	3000	8790			
	SUSKL.58W.40.60		60°	4000	9330			
	SUSKL.58W.30.60		60°	3000	8780			



# Light Modules

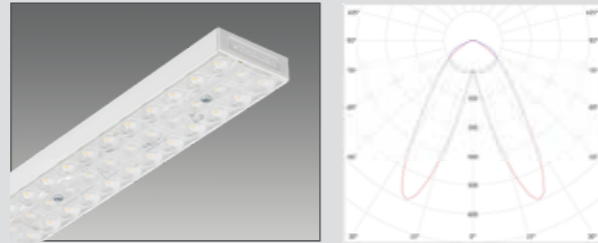
Light Module 90°  
Optic Lens

SU 1440 SKL



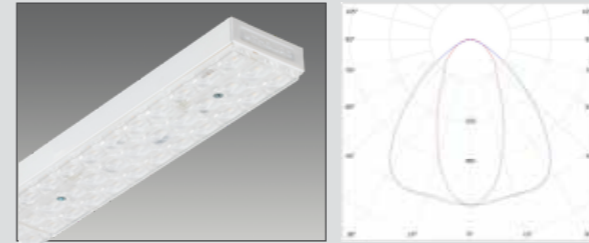
Light Module With Double  
Asymmetric Lens (100° / 25°)

SU 1440 SKL



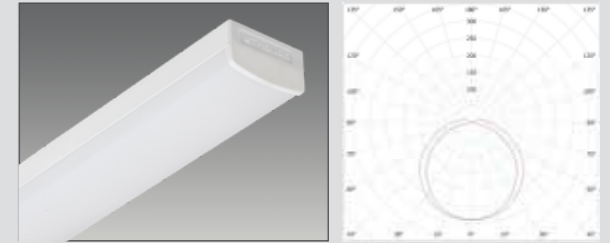
Light Module With Oval  
Distirbution Lens (90° / 50°)

SU 1440 SKL



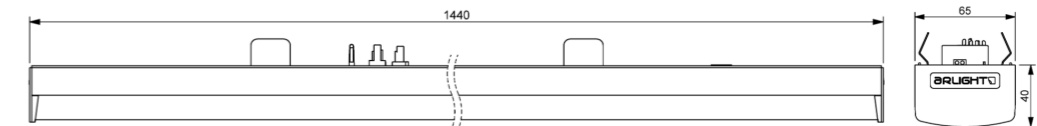
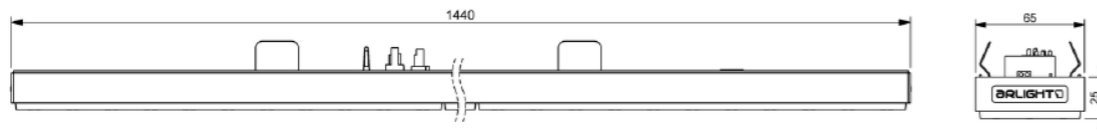
Light Module With Opal  
Diffuser (130°)

SO 1440 SKL



CODE	ORDER CODE	W	BEAM ANGLE	K	LM	CRI	V/Hz	WEIGHT (kg)
SU 1440 SKL	SUSKL.35W.40.90	35	90°	4000	5730	Ra>80	220-240/50-60	2,0
	SUSKL.35W.30.90		90°	3000	5400			
	SUSKL.35W.40.100/25		100°/25°	4000	5930			
	SUSKL.35W.30.100/25		100°/25°	3000	5580			
	SUSKL.58W.40.90	58	90°	4000	9050			
	SUSKL.58W.30.90		90°	3000	8560			
	SUSKL.58W.40.100/25		100°/25°	4000	9460			
	SUSKL.58W.30.100/25		100°/25°	3000	8890			

CODE	ORDER CODE	W	BEAM ANGLE	K	LM	CRI	V/Hz	WEIGHT (kg)
SU 1440 SKL	SUSKL.35W.40.90/50	35	90 / 50	4000	5640	Ra>80	220-240/50-60	2,0
	SUSKL.35W.30.90/50	35		3000	5400			
	SUSKL.58W.40.90/50	58		4000	9180			
	SUSKL.58W.30.90/50	58		3000	8640			
SO 1440 SKL	SOSKL.35W.40.130	35	130	4000	4640			1,7
	SOSKL.35W.30.130	35		3000	4380			
	SOSKL.51W.40.130	51		4000	6930			
	SOSKL.51W.30.130	51		3000	6530			

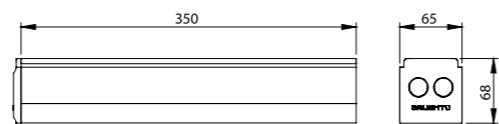




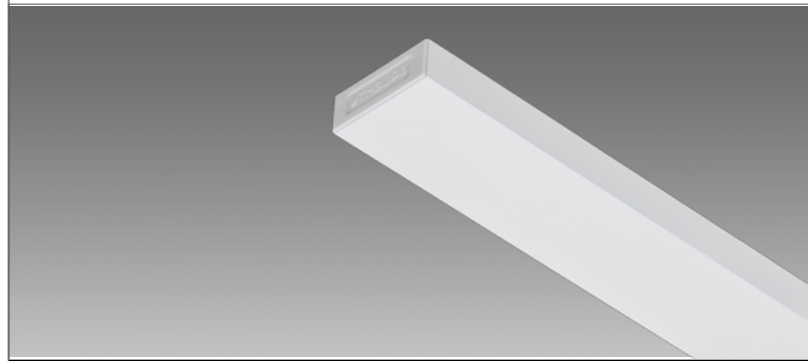
## Energy Supply Unit



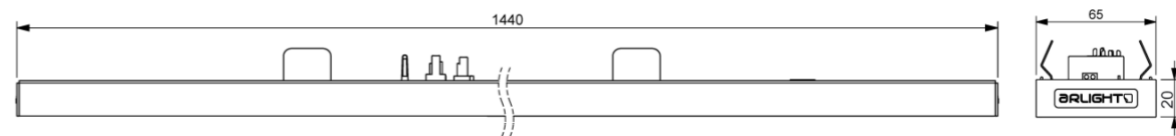
CODE	CABLE	WEIGHT (kg)
SKL.ENR.01	5 conductor	0,9
SKL.ENR.02	7 conductor	0,9



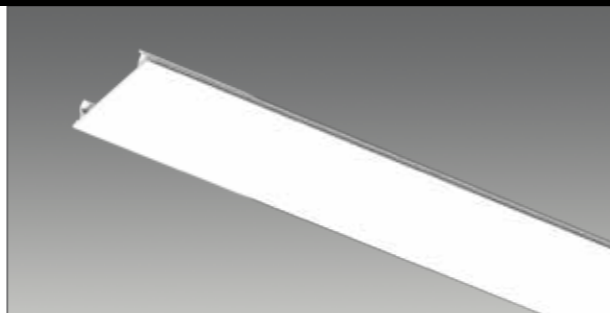
## Empty Looping Unit



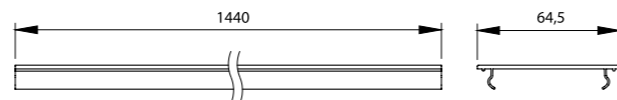
CODE	WEIGHT (kg)
SKL.UN.BS	1,0



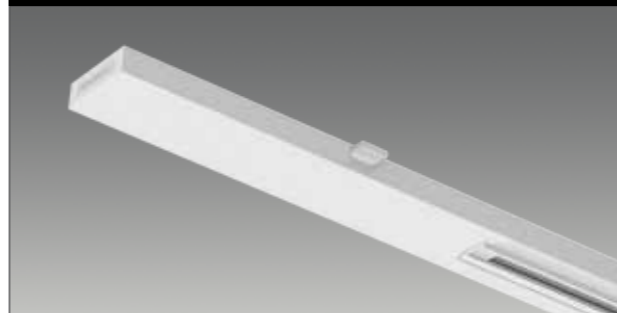
## Plastic Empty Looping Cover



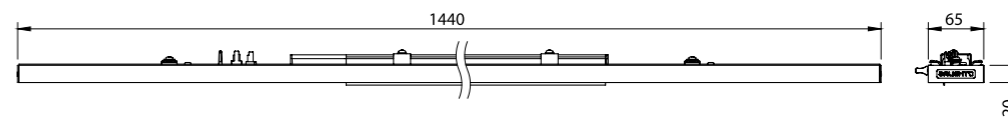
CODE	WEIGHT (kg)
SKL.UN.BP	0,2



## Three Phase Track Integrated Cover Unit



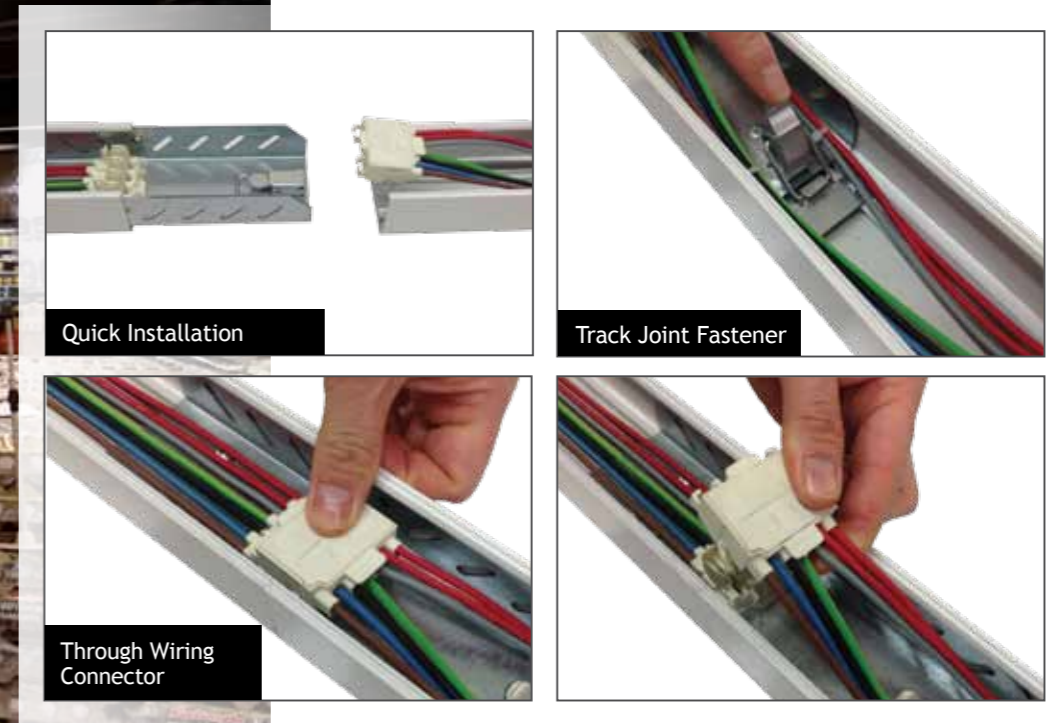
CODE	WEIGHT (kg)
SKL.UN.3F	1,7

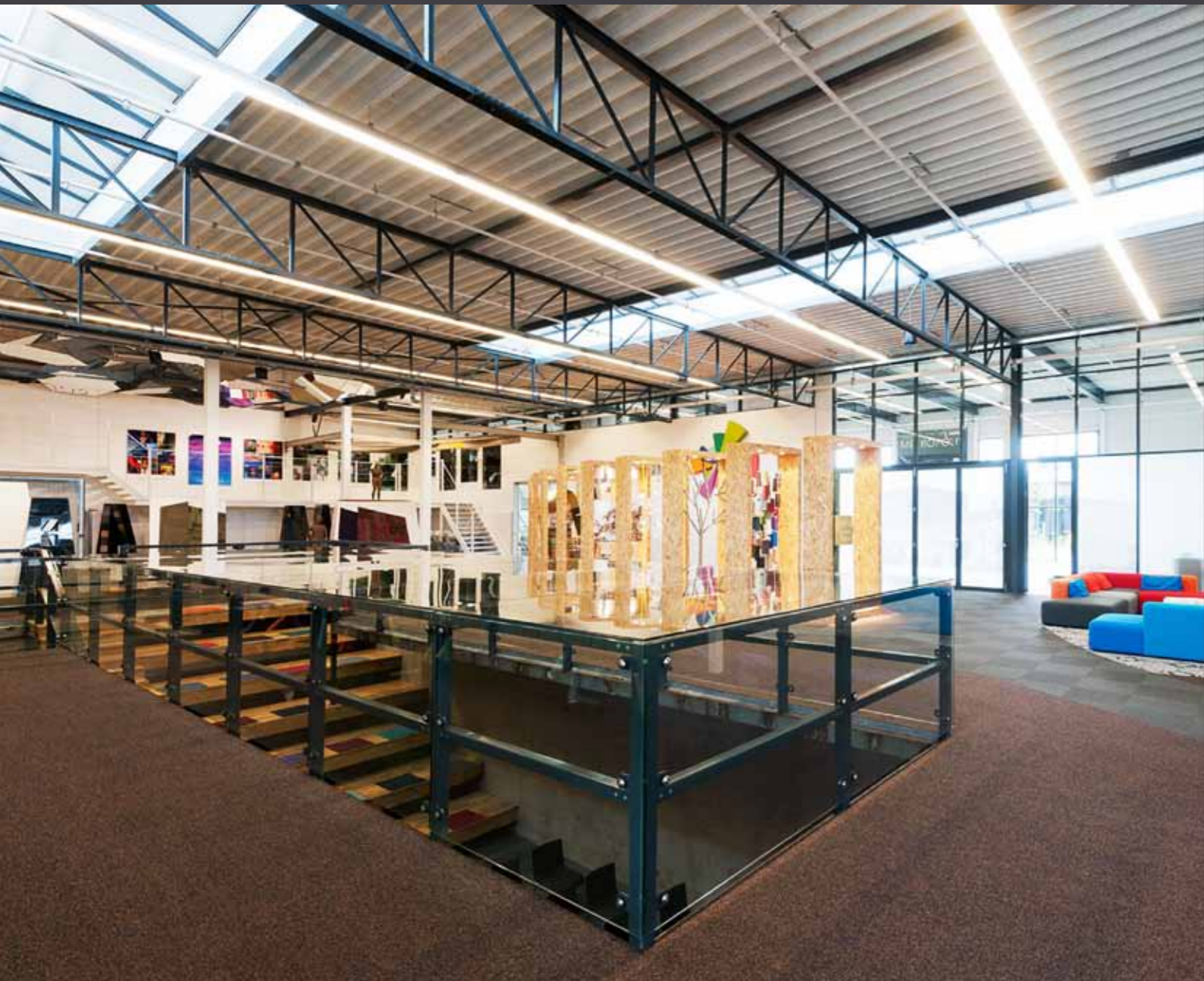


# Skyline

## Energy Supply Unit Andenergy Track Joint Detail

### Light Module Assembly Detail





# Accessories

End Cap For  
Transfer Track

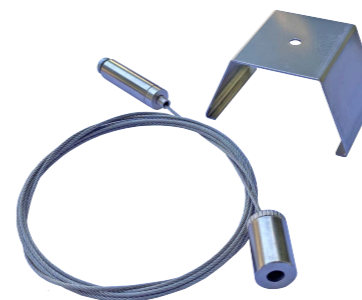


CODE YMX.SKL.END.01

Surface  
Mounting  
Spring



CODE SKL.SM.02



Suspension Kit (1,5mt)

CODE SKL.AS.04

Suspension Kit (3mt)

CODE SKL.AS.05

Suspension Kit (5mt)

CODE SKL.AS.06

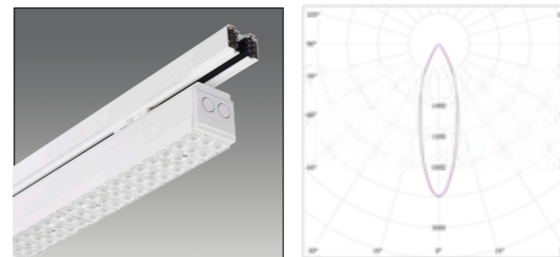
Skyline

# Track Adapter

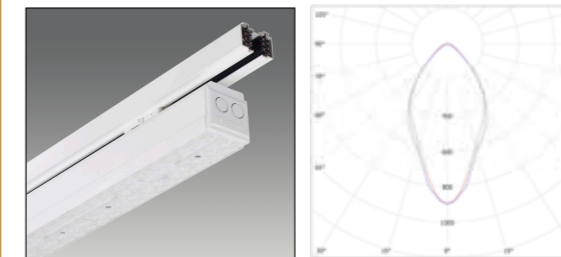


## Track Adapter

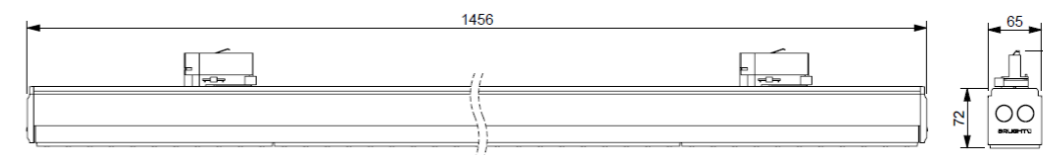
Lighting Fixture  
30° Optic Lens



Lighting Fixture  
60° Optic Lens



CODE	ORDER CODE	W	BEAM ANGLE	K	LM	CRI	V/Hz	WEIGHT (kg)
SR 1440 SKR	SRSKR.35W.40.30	35	30°	4000	5810	Ra>80	220-240/50-60	3,5
	SRSKR.35W.30.30		30°	3000	5470			
	SRSKR.35W.40.60		60°	4000	5790			
	SRSKR.35W.30.60		60°	3000	5440			
	SRSKR.58W.40.30	58	30°	4000	9350			
	SRSKR.58W.30.30		30°	3000	8790			
	SRSKR.58W.40.60		60°	4000	9330			
	SRSKR.58W.30.60		60°	3000	8780			





# Track Adapter



**Lighting Fixture  
90° Optic Lens**

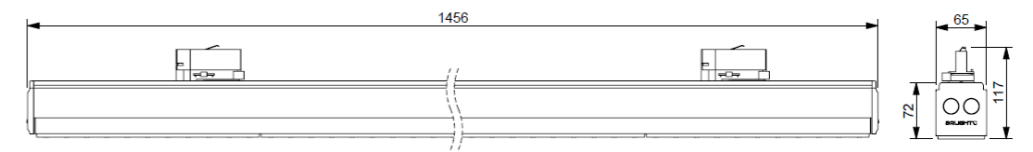
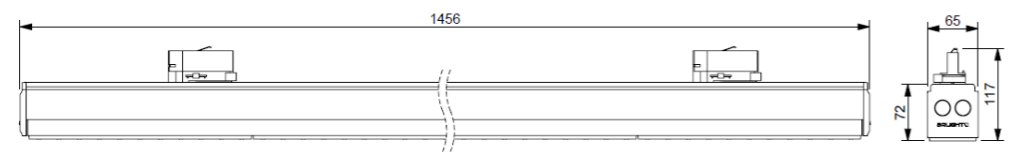
**Lighting Fixture With Double  
Asymmetric Optic Lens (100°/25°)**

**Lighting Fixture With Oval  
Distirbution Optic Lens (90°/150°)**

**Lighting Fixture With  
Opal Diffuser (130°)**

CODE	ORDER CODE	W	BEAM ANGLE	K	LM	CRI	V/Hz	WEIGHT (kg)
SR 1440 SKR	SRSKR.35W.40.90	35	90°	4000	5730	Ra>80	220-240/50-60	3,5
	SRSKR.35W.30.90		90°	3000	5400			
	SRSKR.35W.40.100/25		100°/25°	4000	5930			
	SRSKR.35W.30.100/25		100°/25°	3000	5580			
	SRSKR.58W.40.90	58	90°	4000	9050			
	SRSKR.58W.30.90		90°	3000	8560			
	SRSKR.58W.40.100/25		100°/25°	4000	9460			
	SRSKR.58W.30.100/25		100°/25°	3000	8890			

CODE	ORDER CODE	W	BEAM ANGLE	K	LM	CRI	V/Hz	WEIGHT (kg)		
SR 1440 SKR	SRSKR.35W.40.90/50	35	90 / 50	4000	5640	Ra>80	220-240/50-60	3,5		
	SRSKR.35W.30.90/50	35		3000	5400					
	SRSKR.58W.40.90/50	58		4000	9180					
	SRSKR.58W.30.90/50	58		3000	8640					
SO 1440 SKR	SOSKR.35W.40.130	35	130	4000	4660			Ra>80	220-240/50-60	3,2
	SOSKR.35W.30.130	35		3000	4380					
	SOSKR.51W.40.130	51		4000	6930					
	SOSKR.51W.30.130	51		3000	6530					



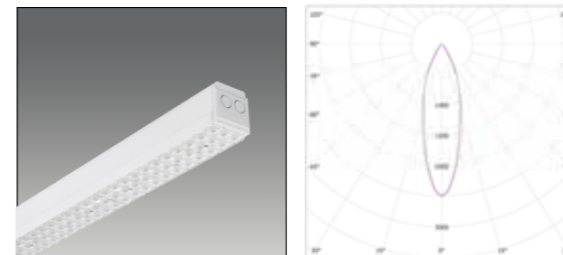
Skyline

# Single System

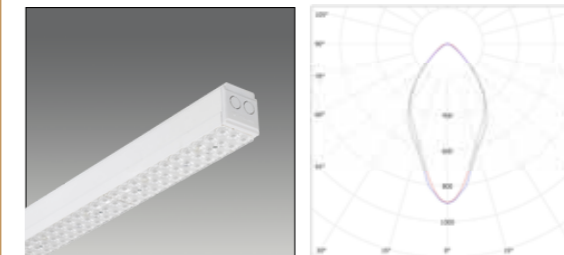


## Single System

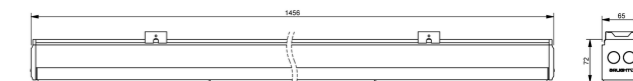
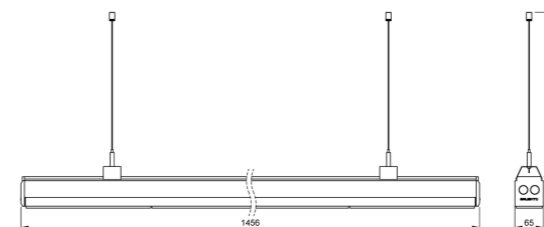
Lighting Fixture  
30° Optic Lens



Lighting Fixture  
60° Optic Lens



CODE	ORDER CODE	W	BEAM ANGLE	K	LM	CRI	V/Hz	WEIGHT (kg)
SU 1440 SKS	SUSKS.35W.40.30	35	30°	4000	5810	Ra>80	220-240/50-60	3,5
	SUSKS.35W.30.30		30°	3000	5470			
	SUSKS.35W.40.60		60°	4000	5790			
	SUSKS.35W.30.60		60°	3000	5440			
	SUSKS.58W.40.30	58	30°	4000	9350			
	SUSKS.58W.30.30		30°	3000	8790			
	SUSKS.58W.40.60		60°	4000	9330			
	SUSKS.58W.30.60		60°	3000	8780			



### Pendant Accessories

CODE SKL.AS.01

CODE SKL.AS.02

CODE SKL.AS.03



### Mounting Bracket

CODE SKL.SM.02

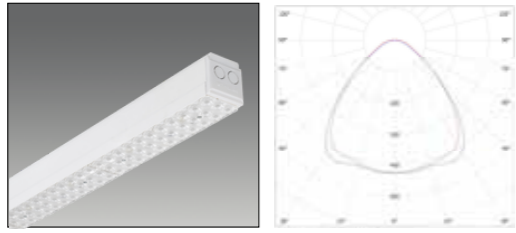


\*Accessories are sold separately

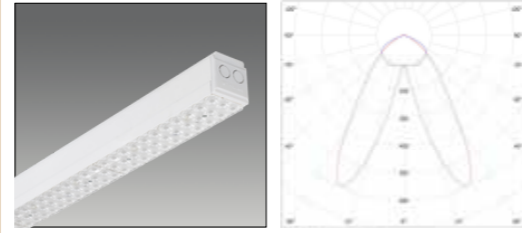


# Single System

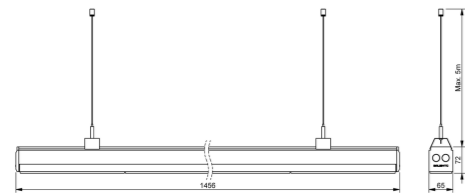
Lighting Fixture  
90° Optic Lens



Lighting Fixture With Double  
Asymmetric Optic Lens (100°/25°)



CODE	ORDER CODE	W	BEAM ANGLE	K	LM	CRI	V/Hz	WEIGHT (kg)
SU 1440 SKS	SUSKS.35W.40.90	35	90°	4000	5730	Ra>80	220-240/50-60	3,5
	SUSKS.35W.30.90		90°	3000	5400			
	SUSKS.35W.40.100/25		100°/25°	4000	5930			
	SUSKS.35W.30.100/25		100°/25°	3000	5580			
	SUSKS.58W.40.90	58	90°	4000	9050			
	SUSKS.58W.30.90		90°	3000	8560			
	SUSKS.58W.40.100/25		100°/25°	4000	9460			
	SUSKS.58W.30.100/25		100°/25°	3000	8890			

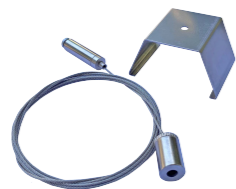


Pendant Accessories

CODE SKL.AS.01

CODE SKL.AS.02

CODE SKL.AS.03



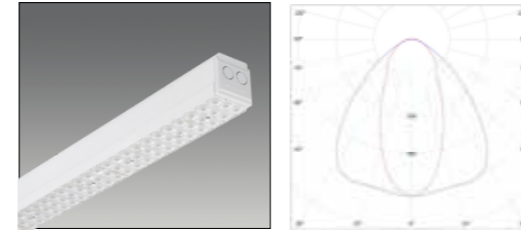
Mounting Bracket

CODE SKL.SM.02

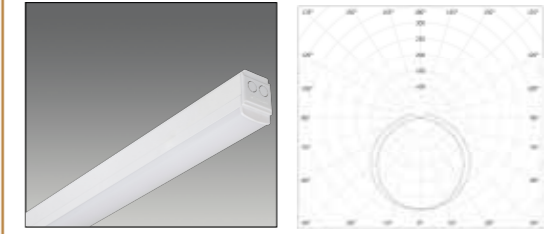


\*Accessories are sold separately

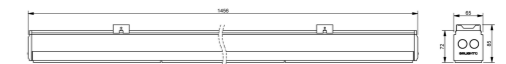
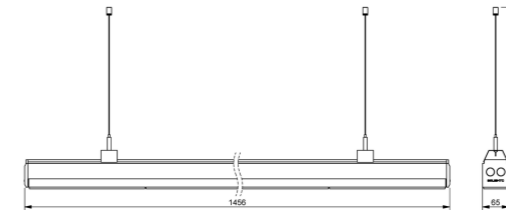
Lighting Fixture With Oval  
Distirbution Optic Lens (90°/50°)



Lighting Fixture With  
Opal Diffuser (130°)



CODE	ORDER CODE	W	BEAM ANGLE	K	LM	CRI	V/Hz	WEIGHT (kg)
SU 1440 SKS	SUSKS.35W.40.90/50	35	90 /50	4000	5640	Ra>80	220-240/50-60	3,5
	SUSKS.35W.30.90/50	35		3000	5400			
	SUSKS.58W.40.90/50	58		4000	9180			
	SUSKS.58W.30.90/50	58		3000	8640			
SO 1440 SKS	SOSKS.35W.40.130	35	130	4000	4660			3,2
	SOSKS.35W.30.130	35		3000	4050			
	SOSKS.51W.40.130	51		4000	6930			
	SOSKS.51W.30.130	51		3000	6530			



Pendant Accessories

CODE SKL.AS.01

CODE SKL.AS.02

CODE SKL.AS.03



Mounting Bracket

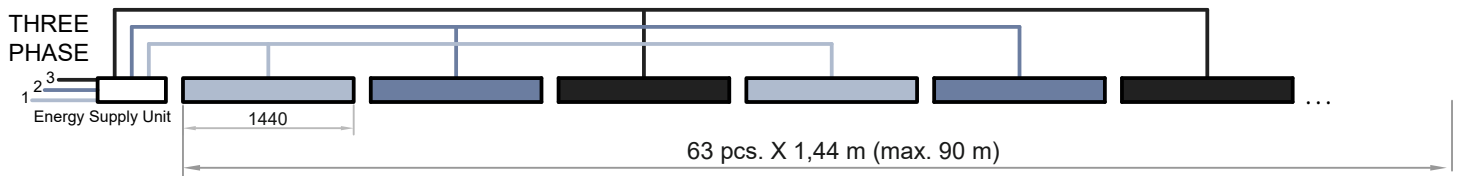
CODE SKL.SM.02



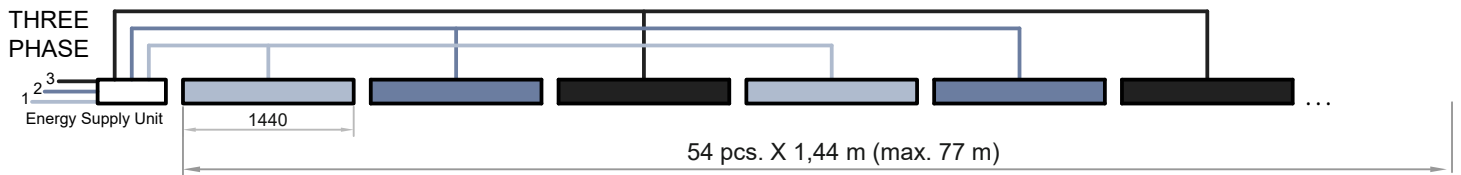
\*Accessories are sold separately

## SKYLINE MAX. LENGHT CALCULATION

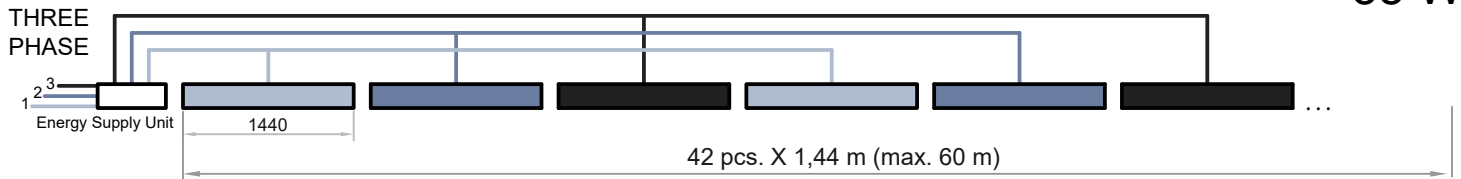
25 W



35 W



58 W



## **ARLIGHT AYDINLATMA A.Ş.**

### **Factory - Headquarter**

Saray Mahallesi 205. Sk.  
No: 4 06980 Kahramankazan  
Ankara - TÜRKİYE  
T: +90 312 815 46 61 (pbx)  
F: +90 312 815 46 60

### **İstanbul Showroom**

Emek Yemez Mah. Okçu Musa Cad.  
Tezgül İşhanı No: 2/29-34 K:2  
Şişhane 34420 Beyoğlu, İstanbul - TÜRKİYE  
T: +90 212 250 43 24 (pbx)  
F: +90 212 250 41 42

**[www.arlight.net](http://www.arlight.net)**



Code: **SKYLINE TR 2017**

Design: **Orfe Reklam Tasarım Ofisi**